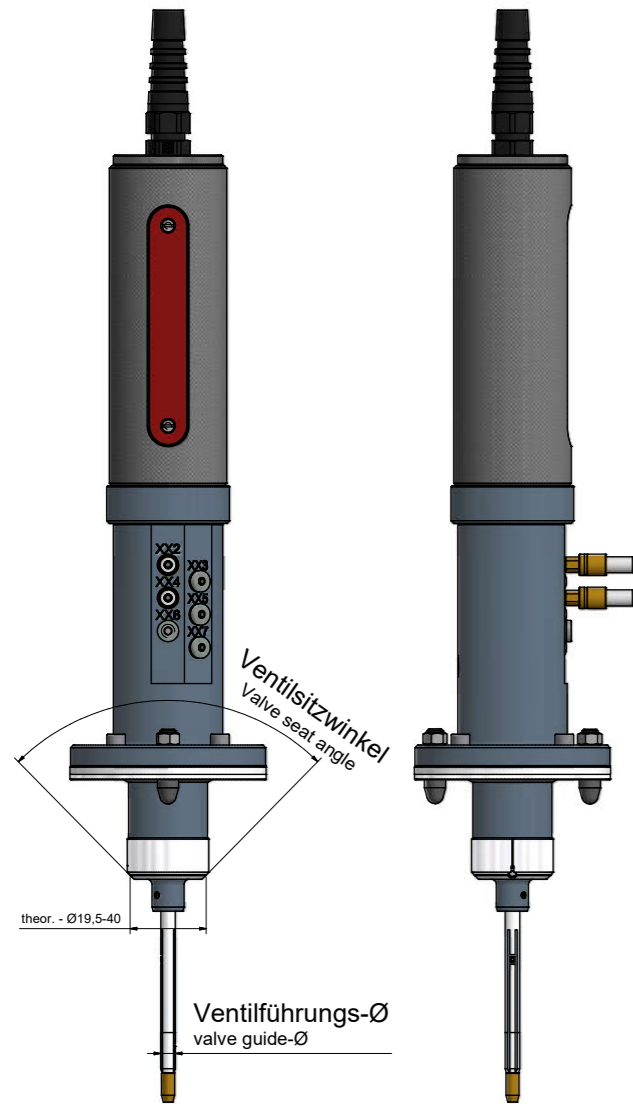


Ventilsitzmesstechnik AT1300

Valve seat metrology



AT1321(theor. Ø40-60 AT1321-S)
Messung Rundheit & Rundlauf
 measure roundness & runout
 -motorisch mit Führungsplatte-
 -motor with guide plate-

- AT1321-1
 AT1321-1S (Ø40-60)
 Ventilsitzwinkel $\leq 120^\circ$ / Ventilführungs- $\text{Ø} < 5,9$
 valve seat angle $\leq 120^\circ$ / valve guide- $\text{Ø} < 5,9$
- AT1321-2
 AT1321-2S (Ø40-60)
 Ventilsitzwinkel $\leq 120^\circ$ / Ventilführungs- $\text{Ø} > 5,9-7,9$
 valve seat angle $\leq 120^\circ$ / valve guide- $\text{Ø} > 5,9-7,9$
- AT1321-3
 AT1321-3S (Ø40-60)
 Ventilsitzwinkel $\leq 120^\circ$ / Ventilführungs- $\text{Ø} > 7,9$
 valve seat angle $\leq 120^\circ$ / valve guide- $\text{Ø} > 7,9$
- AT1321-4
 AT1321-4S (Ø40-60)
 Ventilsitzwinkel $> 120^\circ$ / Ventilführungs- $\text{Ø} > 7,9$
 valve seat angle $> 120^\circ$ / valve guide- $\text{Ø} > 7,9$

Depot mit Messluftabschaltung
 NF 16-41.10
 Depot with measuring air shutdown



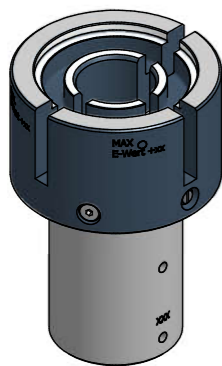
AT1329 A/B/C
Messung Rundheit & Rundlauf
 measure roundness & runout



Depot mit Messluftabschaltung
 NF 16-41.10
 Depot with measuring air shutdown

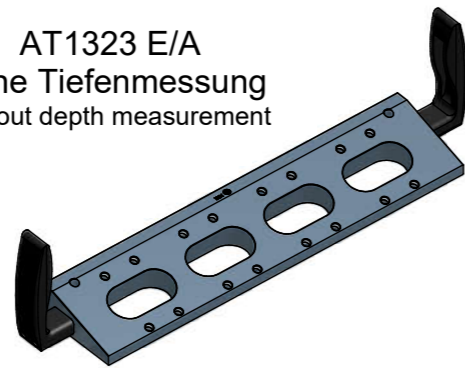


AT1322 / AT1322S
Kombinierte Einstelllehre
 combined adjustment gauge

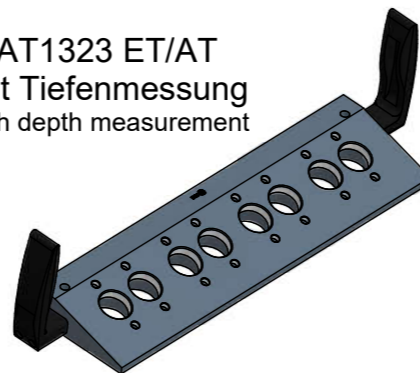


Ausrichtung im Werkstück über Führungsplatten AT 1323 Einlass / Auslass
 Orientation of the workpiece on the guide plate Intake / Exhaust

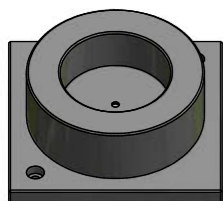
AT1323 E/A
 ohne Tiefenmessung
 without depth measurement



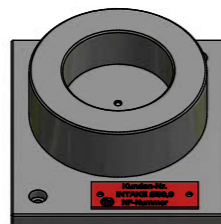
AT1323 ET/AT
 mit Tiefenmessung
 with depth measurement



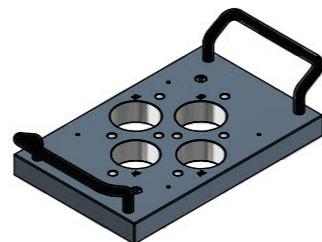
AT1322 AB1
 Standard ohne Beschriftungsschild
 Parking for setting master
 Standard without inscription label



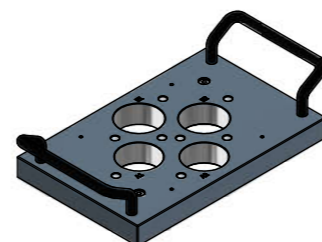
AT1322 AB2
 Standard mit Beschriftungsschild
 Parking for setting master
 Standard with inscription label



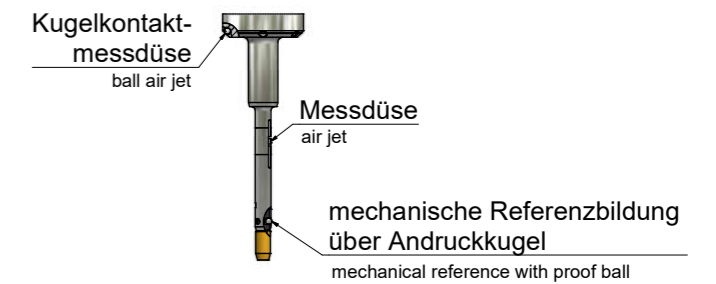
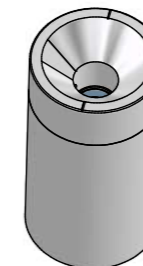
AT1323 Diesel
 ohne Tiefenmessung
 without depth measurement



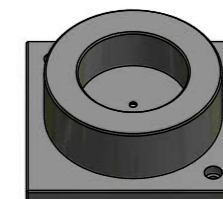
AT1323 Diesel
 mit Tiefenmessung
 with depth measurement



AT1330
Kombinierte Einstelllehre
 MIN / MAX
 combined adjustment gauge min/max



AT1322 AB1
 Standard ohne Beschriftungsschild
 Parking for setting master
 Standard without inscription label



AT1322 AB2
 Standard mit Beschriftungsschild
 Parking for setting master
 Standard with inscription label

